



**Schools and public spaces flooded**

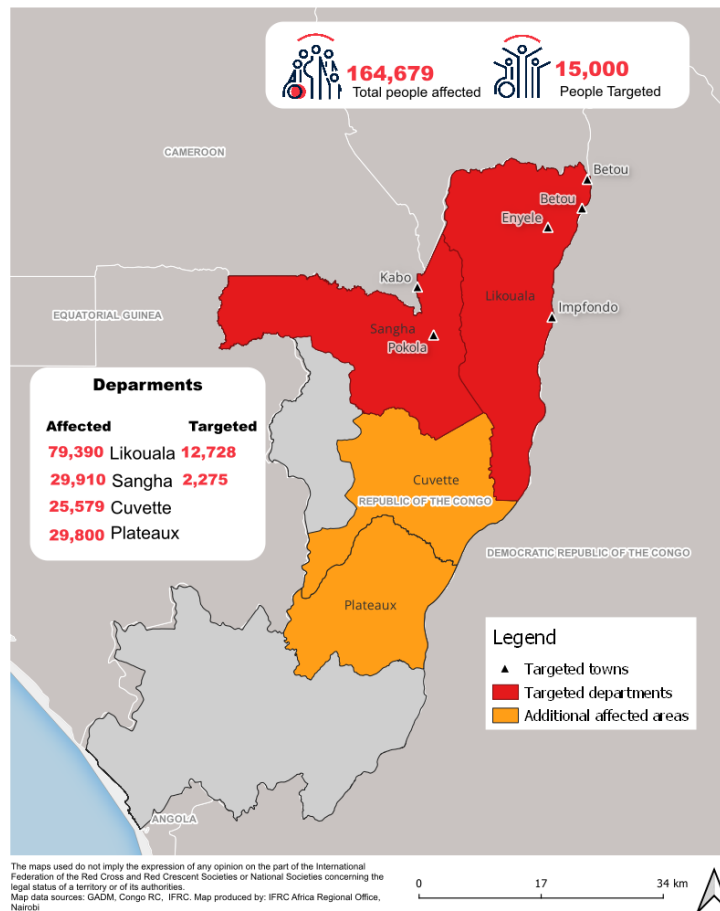
Appeal: <b>MDRCG020</b>	DREF Allocated: <b>CHF 489,727</b>	Crisis Category: <b>Yellow</b>	Hazard: <b>Flood</b>
Glide Number: <b>FL-2023-000001-COG</b>	People Affected: <b>164,679 people</b>	People Targeted: <b>15,000 people</b>	
Event Onset: <b>Slow</b>	Operation Start Date: <b>2023-01-10</b>	Operation End Date: <b>2023-05-31</b>	Operation Timeframe: <b>4 months</b>
	Targeted Areas:	<b>Likouala, Sangha</b>	

# Description of the Event



Republic of Congo Floods

01/01/2023 • FL-2023-000001-COG



Map with targeted department and affected by IFRC

## What happened, where and when?

Since September 2022, heavy rains and strong winds have caused flooding as well as the destruction of homes and thousands of hectares of plantations in the departments of Likouala, Sangha, Cuvette and Plateaux. 164,679 people have been affected by the floods, displaced and sheltered in the forests, makeshift shelters and many are in perpetual search of a refuge.

The consequences of these floods are compounded by the successive impact of the rains on the communities that are repeatedly affected throughout the rainy seasons since October 2019 for the 4 most affected departments above.

According to the observations of the Congolese Red Cross branches, it seems relevant to emphasize that the areas, populations and lands affected since the floods of October 2021 are among the disasters victims listed again due to the rains of September 2022. From September of each year to March of the following year, rainfall affects an average of 8 departments out of the 12 in the country.

The level of deterioration of the living conditions and the needs observed are the cumulative result of the rainy seasons since 2021, whose rains in the last quarter of 2022 have only worsened the already precarious situation of communities since 2021 in endemic departments to flooding. In effect, the rains of November 29, 2021 caused a sharp increase in water level and led to the total or partial flooding of several villages, neighborhoods, districts of the departments of Likouala (districts of Betou, Epena and Dongou), Sangha; Cuvette and Plateaux. During these floods in 2021, the government put in place a strategic flood response plan in the affected localities with the support of the United Nations and the partners including the Red Cross. The CRC in support of this plan provided assistance

to communities through the DREF. Unfortunately, the lack of funding in general, has limited the implementation and left populations in need, still displaced and vulnerable. Partner support of the Government's response plan is a necessity.

According to the report produced by an assessment mission organized in November 2022 by the United Nations organizations and the government, 164,679 people affected by this situation are in need of humanitarian assistance. Several departments affected: LIKOUALA with three localities (Betou , Enyélé and Impfondo) and SANGHA (Pokola and Kabo).

On December 30, 2022 , the Ministry of Social Affairs, Solidarity and Humanitarian Action sent a letter to the Congolese Red Cross in order to request assistance for the benefit of the victims of the 2022 floods which identified needs are very broad.



**Table of summarised data of affected and targeted areas compiled by Congo RC as of 30.12.2022 based on joint assessment data**

Affected departments	Areas affected	People affected	Destroyed houses	Hectare destroyed include agro-pastoral lands	Targeted through this DREF
<b>TOTAL</b>	<b>13 Localities</b>	<b>164679</b>	<b>7161</b>	<b>173</b>	
LIKOUALA	<b>TOTAL</b>	<b>79390</b>	<b>3985</b>	<b>97</b>	Populations cible 12725 dont 2545 ménages uniquement pour les trois localités ciblées pour l'opération (Betou, Impfondo et Enyellé)
	Betou	15678	754	18	
	Enyelle	10890	473	12	
	Epena	11459	289	9	
	Dongou	12987	441	11	
	Bouanela	2522	101	7	
	Liranga	6874	206	10	
Impfondo	18980	1721	30		
SANGHA	<b>TOTAL</b>	<b>29910</b>	<b>1223</b>	<b>24</b>	Populations cible 2275 dont 455 ménages uniquement pour les deux localités ciblées pour l'opération (Kabo et Polola)
	Pokola	14845	567	11	
	Kabo	9789	244	5	
	Pikounda	5276	412	8	
CUVETTE	<b>TOTAL</b>	<b>25579</b>	<b>928</b>	<b>37</b>	<b>Not targeted in this DREF</b>
	Mossaka	13895	570	21	Not targeted in this DREF
	Loukola	11684	358	16	Not targeted in this DREF
PLATEAUX	<b>TOTAL</b>	<b>29800</b>	<b>1025</b>	<b>15</b>	<b>Not targeted in this DREF</b>
	Makotimpoko	29800	1025	15	Not targeted in this DREF

Request for assistance from Governmen Table of summarised data from assessment by CRCS

## Scope and Scale

The floods have caused the displacement of populations to the forests, churches, and rare schools that are on land farms, and to nearby villages.

Nearly 7,161 homes were affected, distributed as follows:

- Department of Likouala total houses affected 3985: 754 houses in Betou, 1,721 in Impfondo, 489 in Enyellé (houses flooded underwater), 567 in the locality of Pokola (government sources Ministry of Humanitarian Action)
- In the Sangha department, a total of 1223 houses were destroyed. With 244 houses destroyed in Kabo.

More than 173 hectares of land were drowned by water including cultivated land and cattle washed away and drowned. As the affected departments are the most important in agro-pastoral production in the country, the Government has established that a constant increase in prices on the markets for basic necessities and other goods makes these populations even more vulnerable. Inflation on products ranges from 50% to 80% and affects particularly Impfondo, Betou, Liranga, Mossaka

Among the 164,679 people affected by the floods, there are several layers of vulnerable populations identified in the joint assessment who are at high risk of disease, malnutrition and protection due to their displacement. The report includes 28,644 children under 5 years of age, 8,317 women, including at least 9,652 pregnant or breastfeeding women, and 640 persons with disabilities.

In 2019, the floods already affected about 170,000 people in the North and Centre of 8 departments (<https://floodlist.com/africa/congo-brazzaville-floods-december-2019>), 50,000 in 2021 along the main rivers in the central and northern departments of Likouala, Sangha, Cuvette and Plateaux (<https://floodlist.com/africa/congo-brazzaville-floods-november-december-2021>) and 71,690 people reported by the Government in the departments of Likouala, Cuvette, Plateaux, and Sang

Now a total of 220,000 people would be affected by the floods that began in September 2022 (source: joint report

of a multisectoral assessment of floods in the 4 northern departments: Plateaux, Cuvette, Likouala, Sangha made public by the Ministry of Humanitarian Action on 12.30.2022).

In general, the northern part of the country is still the most exposed to flooding. Populations benefit from little opportunity and time for resilience and are subject to frequent displacement as a survival coping mechanism. This part of the world is experiencing a lot of humanitarian pressure with the displacement of people from neighboring countries and cyclical crises.

## Previous Operations

Has a similar event affected the same area(s) in the last 3 years?	<b>Yes</b>
Did it affect the same population groups?	<b>Yes</b>
Did the National Society respond?	<b>Yes</b>
Did the National Society request funding from DREF for that event(s)?	<b>Yes</b>
If yes, please specify which operations	<b>DREF MDRCG018</b>

### **If you have answered yes to all questions above, justify why the use of DREF for a recurrent event, or how this event should not be considered recurrent**

Floods are not only recurrent but cumulative with successive impacts on the communities, due to the seasons, which cannot recover from previous floods, are once again affected by the rains.

The impact of the 2022 floods is one of the largest in recent years after the 2019 floods. The Government, following this impact, requested the assistance of partners and updated the response plan started in 2021. The Red Cross, having received a request from the Government, is part of this plan for emergency response but also to ensure the bases of coordination for a more anticipated support approach in the coming years.

### **Specify how the lessons learnt from these previous operations are being used to mitigate similar challenges in the current operation**

- Consultation with the competent authorities makes it possible to unlock questions relating to the identification of beneficiaries. However, this remains a major problem in rural areas of the country
- Preliminary assessments are needed to determine the best wording and type of transfer;
- Collaboration with other partners and actors in the field to define selection criteria adapted to the context and target priority beneficiaries based on these criteria;
- The establishment of a community feedback mechanism makes it possible to quickly collect post-transfer technical complaints and deal with them in a short time. Indeed, one week after the transfers, 95% of the technical complaints relating to the loss of SIM cards, etc. had been collected and processed;

## Current National Society Actions

<b>Health</b>	First Aid for the Injured in the Floods psycho-social support for the victims of the disaster. Awareness-raising on the prevention of waterborne Diseases
<b>Coordination</b>	the CRC participates in the various meetings of the crisis committee organized by the local authorities in the 2 departments .

The Ministry has strategic response and recovery plans, which must serve as a basis for all the actions of the partners involved in this response, as well as the actions of the Congolese Red Cross

## Movement Partners Actions Related To The Current Event

<b>IFRC</b>	The Congolese Red Cross benefits from the technical support of the Representation of the IFRC cluster based in DRC for the planning and implementation of activities .
<b>ICRC</b>	The ICRC mission based in Kinshasa is closely monitoring the situation and advising the NS on measures to be taken in accordance with its mandate to alleviate the suffering of the affected populations.
<b>Participating National Societies</b>	The delegation of the French Red Cross is present in the country to provide financial support to the CRC engagement for the rapid assessment mission led by the Government and the United Nation

## Other Actors Actions Related To The Current Event

<b>Government has requested international assistance</b>	Yes
<b>National authorities</b>	<p>As of 30 December 2022, the Ministry of Humanitarian Action was requesting assistance from the Congolese Red Cross by sharing the evaluation report conducted jointly with the participation of the National Society.</p> <p>The members of parliament and politicians of the affected localities have in turn brought food and non-food items to the affected populations.</p> <p>The Volunteers of the Red Cross support the authorities in the distribution of these food and non-food items. The Government has also drawn up a coordination plan by identifying sectors of intervention, putting the Red Cross in the health, WASH, and livelihood response.</p>
<b>UN or other actors</b>	<p>At the meeting on 14 December 2022, UNDP granted the Congolese Government an envelope of one billion CFA francs as support for the victims for the purchase of food and non-food items.</p> <p>The Government's response plan calls for the construction of solid shelters and is working on mobilizing additional financial resources to provide this assistance in the 4 affected departments (Likouala, Sanga, Cuvette, and Plateaux)(UNDP)</p> <p>UNHCR, through its presence in Likouala and Plateaux, focuses on the establishment of temporary shelters for the victims of this locality.</p> <p>WHO: Focuses on providing medical assistance to all affected communities.</p> <p>UNICEF: Distribute school kits to children who have lost their supplies during the disaster, participate in coordination meetings for the planning of a response in the coming days</p> <p>WFP: It advocates increasing food aid in all affected areas and aims to bridge the gap for the 32,936 affected households.</p>

The country benefits from the intervention of Government partners including several members of the United Nations since 2019 yet they haven't been able to cover the needs. The gap in the humanitarian response remains significant following the 2022-2023 floods.

**Are there major coordination mechanisms in place?**

The Ministry of Humanitarian Action has set up a coordination meeting with partners at the national level and the Congolese Red Cross is also participating. This will be the means of coordination for all partners. The Congolese Red Cross will also ensure continuous information sharing with the movement's partners

# Needs (Gaps) Identified



## Water, Sanitation And Hygiene

Hygiene and sanitation promotion: There are acute hygiene and sanitation needs. At least 1,890 latrines were damaged by flooding in the Likouala and Sangha departments resulting in pollution of water sources by excreta. It should be noted that in the affected areas, only about 15% of households have usable latrines and water stagnates waste that flows into community spaces. As such, there is an obvious risk of waterborne and faecal-oral diseases.



## Livelihoods And Basic Needs

The Government's rapid assessment report indicates 173 hectares of flooded crops in all affected areas. Dozens of hectares of food crops have been destroyed, especially in the locality of Kabo and Pokola Pikounda as well as in the surrounding villages, the situation is the same in the locality of Betou. The locality of Enyelle where a large part of the population practices farming, the flooding has had a negative impact on both plantations and livestock, obstructing access to pasture and swiping away livestock and canoes as one of the sources of income for these populations.

Based on the seasonal calendar, it is very likely that the crop and fishing season will experience a total upheaval and reduced harvests for most of the affected communities. This will lead to a very difficult period.

the evaluation identified the following needs:

- Support for livelihoods (NFI, purchase of fishing instruments, improved crops)
- Immediate food assistance for affected households, including children under 5 and pregnant women. The impact on food insecurity for this crisis must be taken into account given the number of hectares destroyed and the inflation on food staples. Especially for those who are highly vulnerable and whose income came from fishing, farming and livestock activities.



## Shelter Housing And Settlements

The floods have displaced people whose homes have been destroyed. About 200 houses were destroyed. In the locality of Betou, the assessment identified approximately 13,861 displaced persons and 8,304 homeless persons.



## Health

The people were referred to the nearest health facilities by the CRC rescue teams by means of canoes. Since the caregivers themselves are affected by the disaster, the care of these people is difficult due to the lack of basic necessities, the support from these health centers in terms of health kits in the (Health Training (FOSA), wastewater treatment kit which proves to be important for a good care of the affected communities is lacking.

Affected households (displaced/refugees in host families) do not have any protective equipment against the weather and are exposed to malaria vectors, the distribution of blankets and mosquito nets are necessary to

limit the negative effects on their health and this must be accompanied by a sensitization of the communities in the management of waterborne diseases cases. It should be noted that this operation does not cover this requirement, but initial evaluations show that the health centers of the Likouala and Sangha have a need for reinforcement in first aid products for the care of the sick, and the wounded.

Taking into account the number of people affected by the disasters, psychological crises are recurrent in this disaster-affected community. Please note that nearly 35% of this displaced population needs psychological support aggravated by the unhealthy and overcrowded host families and all the protection problems they create. Chronic patients, people with disabilities, elderly people, female-headed households, child-headed households, pregnant women and nursing mothers, widows strongly feel the need for psychosocial support.

## Operational Strategy

### Overall objective of the operation

This DREF allowance aims to remember 15,000 people affected (3,000 households) by the floods, by providing support in water hygiene and sanitation, livelihoods, health (fight against waterborne and contagious diseases, referencing of cases), and community engagement in the departments of Likouala (Betou, Impfondo, and Enyellé) and Sangha (Kabo and Pokola Pikounda) for 4 months.

### Operation strategy rationale

In order to relieve the suffering of 15,000 people affected by the disaster in the departments of Likouala and Sangha and to support their emergency needs as well as support the resumption of their daily activities including their socio-economic activities. This is by reducing the risk of exposure to health risks and difficulties resulting from floods, including intangible psychological input and socio-community cohesion in the various actions that will be carried out jointly with the beneficiaries and the different platforms ( the social action constituency, departmental crisis coordination, representatives of the affected communities

To this effect: 150 volunteers and 7 supervisors will be mobilized for the implementation of the operation. The CRC's intervention will focus on the following areas:

- Supporting livelihoods and EHIs (essential household items) through unconditional and versatile cash transfers, to cover the most urgent needs of the households (food, sanitation, household items according to household needs, etc.) The preferred mechanism in this operation is the transfer of Mobile Money through the services of a financial services provider.
- HealthCare: Psychosocial support and awareness-raising on water-borne diseases.
- Emergency First Aid:
- WASH: hygiene promotion and environmental sanitation,
- Establishment of a community feedback system.
- In terms of capacity, the National Society will be accompanied by the IFRC delegation in the DRC for continuous technical support. Ongoing and ad hoc technical support via coordinated follow-ups.

As part of its strategy, the CRC will conduct a detailed needs assessment at the beginning of the implementation of this operation. CRC volunteer teams will undergo refresher training /a refresher package to ensure that all volunteers have up-to-date information on vulnerability and need assessment, WASH, health prevention, psychological support, and protection.

This operation will also serve as background work to develop an exit strategy in coordination with partners and communities. The recurrence of flooding in affected departments makes response actions less and less a sustainable solution for communities. The limitation of financing, the complexity of the situation with the cumulative impacts of rain on agricultural income sources, and the increase in needs are all factors that evolve negatively with the seasons.

The NS plans to submit to the Government and partners an exit strategy based on some mitigation measures identified by the communities (increasing dam height, gutters drainage, sanitation work, etc.) and the establishment of an early warning and anticipatory action system

During the next money transfer operations, training on money transfers as well as awareness-raising campaigns on phone use and SIM card security will be organized.

-Awareness campaigns on the importance of NICs with the help of the different actors will be organized (Ministry of Social Affairs, local authorities, and Ministry of the Interior) in order to facilitate the identification of heads of families.

## Targeting Strategy

### Who will be targeted through this operation?

This operation will target the populations of the localities most affected by the floods. These will be households in the departments of Likouala and Sangha. Distributed as follows:

- LIKOUALA: 12725 people including 6712 men and 6013 women ( 2545 households ) distributed as follows:
- Betou,( 850 households and 4,250 people targeted, including 2,237 men and 2013 women) , Enyellé, ( 490 households and 2,450 people, including 1,325 men and 1,125 women ); Impfondo ( 1,205 households and 6,025 people, including 3,150 men and 2,875 women).
- For the SANGHA in the: □ LIKOUALA: 12725 people including 6712 men and 6013 women ( 2545 households ) distributed as follows:
- Pokola ( 115 households and 575 people including 300 men and 275 women)
- Kabo ( 340 households, 1,700 people including 875 men and 825 women)

### Explain the selection criteria for the targeted population

Beneficiaries are the most vulnerable populations following the floods in the most affected localities of the Likouala (Betou, Enyellé, Impfondo) and Sangha (Kabo, Pokola ) departments. The beneficiaries will be selected on the basis of the following criteria

- Households that have lost their habitats
- Women heads of households
- Elderly people living alone
- Pregnant and breastfeeding women
- Households with people with disabilities
- Households with children under 5
- Orphans at an early age
- Moved for security reasons

For consensual and inclusive targeting, a thorough evaluation will be carried out by community volunteers from the files made available after a training/ briefing supported by a national evaluation mission. It will identify groups of people with specific needs and the actual size of all households. The summary of the evaluation will present a census of disaster victims on disaggregated lists that will be approved by ad hoc selection committees set up in a participatory and inclusive manner at the level of each locality targeted by the DRE

## Total Targeted Population

Women:	<b>4,268</b>	Rural %	Urban %
Girls (under 18):	<b>2,846</b>	%	%
Men:	<b>5,521</b>	People with disabilities (estimated %)	
Boys (under 18):	<b>2,365</b>	<b>7.00 %</b>	
Total targeted population:	<b>15,000</b>		

# Risk and security considerations

## Please indicate about potential operational risk for this operations and mitigation actions

Risk	Mitigation action
<p>Rains and floods are worsening and affecting other villages/settlements and localities in the Likouala department (especially those most vulnerable to flooding). Heavy rains and flooding affect all areas of the Sangha along the Sangha and Likouala rivers with grasses and the Congo River. The situation causes an increase in population displacements and the emergence of epidemics and waterborne diseases. Affected populations migrate en masse to other localities or countries; thus, raising the issues of displaced persons.</p>	<p>The CRC will have discussions on an ongoing basis with Movement partners to identify the best way to respond to increased humanitarian needs and to raise other sources of funding through an emergency call or among local actors. since the rains continue until June, the NS could make a revision to the DREF by extending the implementation period by 2 months at most</p>
<p>According to weather forecasts, the rains are increasing and flooding continues in the 2 targeted departments with a significant rise in the waters of the rivers and the Congo River. Water levels are rising and causing new displacements of populations. This will create a challenge in accessing affected communities and overcrowding in reception areas. Several cases of diseases of waterborne origin will be reported in these departments.</p>	<p>The CRC will continue the response outlined in this action plan and will continue to monitor the situation and provide updates as necessary. If necessary, the CRC will expand its action by multiplying the sectors of intervention. Partners will be regularly updated on the CRC's action for proper coordination and to avoid similar activities.</p>

## Please indicate any security and safety concerns for this operation

The security risks in the Likouala and Sangha are moderate, given that these are high attraction and commercial departments where there are banks, mobile phone agencies and cooperatives. The financial transaction risk will be mitigated by the reduced visibility of individual transactions from cash money points in cities/districts/villages provided by mobile phone agents (as opposed to large in-kind distributions).


To reduce the risk of personnel of RCDRC falling victim to crime, violence, or health and road hazards, active risk mitigation measures must be adopted. This includes monitoring the situation, field travel procedures, the establishment of special security clearance procedures for travel to high-risk areas (orange and red phases) and the implementation of minimum security and safety standards. Volunteers will be trained/briefed and insured. Security plans are available at the CRC and will be updated before any deployment.

# Planned Intervention

	<b>Secretariat Services</b>	<b>Budget</b>	CHF 44,375
		<b>Targeted Persons</b>	6
<b>Indicators</b>		<b>Target</b>	
Surge Deployed		1	
Field monitoring mission at the level of the villages		5	
<b>Priority Actions:</b>		<ul style="list-style-type: none"> <li>-Field monitoring mission at the village level to monitor activities in the field. An average of 1 mission per month will be conducted in addition to the mission for assessment and briefings on the operation. The NS with the support of Kinshasa will ensure this first mission. There are a total of 5 missions.</li> <li>-IFRC Operational and Technical Monitoring Mission, Kinshasa-Brazzaville Office IFRC</li> <li>-International mission for monitoring and evaluation by the Kinshasa office</li> <li>-Transmission of financial files to the delegation of Kinshasa via DH</li> <li>-Financial management and regular monitoring of narrative and financial report</li> <li>-Translation of documents English French and vice versa</li> <li>-Regular communication between teams and technical support</li> <li>-Deployment of a surge with Cash profile for daily monitoring and support of the NS</li> <li>.</li> </ul>	

	<b>National Society Strengthening</b>	<b>Budget</b>	CHF 36,083
		<b>Targeted Persons</b>	157
<b>Indicators</b>		<b>Target</b>	
Deployed Supervisors		7	
Volunteers trained, insured and deployed		150	
		<ul style="list-style-type: none"> <li>-Volunteers' insurance</li> <li>-Organize a preparatory meeting and planning of operations with the heads of the branches and the National Staf</li> <li>-Purchase and distribution of T-shirts, Vests (bib) for volunteers</li> <li>-Deployment of 5 CRC regional staff on a part-time basis to support field activities with volunteers</li> <li>-Purchase and distribute protective equipment for volunteers and supervisors. COVID</li> <li>-Mission of headquarters staff to monitor activities</li> </ul>	


<b>Priority Actions:</b>	<ul style="list-style-type: none"> <li>-Batteries for megaphones</li> <li>-Megaphones</li> <li>-Logistics support transport of items and handling/warehousing</li> <li>-Purchase of fuel for operational monitoring</li> <li>-Leasing vehicle</li> <li>-Part-Time Deployment (Motivation) Project Leader</li> <li>-Full-time deployment (Motivation) Assistant Project Manager</li> <li>-Administrative Fees CRC</li> </ul>
--------------------------	---

	<b>Protection, Gender And Inclusion</b>	<b>Budget</b>	CHF 1,206
		<b>Targeted Persons</b>	15000

<b>Indicators</b>	<b>Target</b>
-------------------	---------------

Number of volunteers and supervisors trained on minimum standards for ERP	157
---	-----

<b>Priority Actions:</b>	<ul style="list-style-type: none"> <li>-Sensitization of volunteers and staff on sexual and gender-based violence and child protection, PSEA and ERP.</li> <li>-Brief/train assessment teams on the CEA approach and its specific tools for initial assessment, with an emphasis on communication skills, participation, feedback and gender PEAS/Inclusion modules to ensure good engagement and involvement of target groups.</li> <li>and the involvement of target groups</li> <li>-Integrate volunteer information into the EAPS and GBV. Gender mainstreaming to ensure good engagement and participation of target groups and host populations</li> <li>-Identify safe referral pathways for patients seeking psychological support and refer them accordingly.</li> </ul>
--------------------------	---

	<b>Water, Sanitation And Hygiene</b>	<b>Budget</b>	CHF 70,954
		<b>Targeted Persons</b>	15000

<b>Indicators</b>	<b>Target</b>
-------------------	---------------


Number of households receiving aquatabs	3000
---	------

Proportion of population affected by hygiene promotion activities	90
---	----

<b>Priority Actions:</b>	<ul style="list-style-type: none"> <li>- Water quality analysis and/or water treatment</li> <li>-Provide drinking water to households through the distribution of aquatabs</li> <li>-Distribution of aquatabs</li> <li>-Design/print IEC WASH/Health materials for volunteers</li> <li>-Provide sanitation kit to volunteers</li> <li>-Provide a volunteer protection kit</li> <li>-Distribution costs for all items</li> </ul>
--------------------------	---

	<p>-Hygiene promotion</p> <p>The WASH assistance will start with a three-day training for 100 volunteers and supervisors in the Likouala and 50 volunteers and 2 supervisors in the Sangha:</p> <ul style="list-style-type: none"> <li>-☐ Hygiene promotion</li> <li>-☐ Water quality analysis and/or water treatment</li> <li>-☐ The use of IEC equipment.</li> <li>-☐ Distribution of aquatabs to 3,000 households</li> <li>-☐ Briefing on the CEA to better engage communities in an inclusive way in the process of identifying their needs. Community engagement in this process will also facilitate their involvement in the actions to be taken. Additionally, the evaluation questionnaires will cover other areas as well. In particular to collect the information requirements of the affected communities, as well as their preferred sources of communication. The evaluation results will also provide information on the relevant and accepted communication tools and community engagement that would be deployed in support of the sectors which have also been identified as priorities in the current emergency response.</li> </ul>
--	--

	<b>Community Engagement And Accountability</b>	<b>Budget</b>	CHF 19,619
		<b>Targeted Persons</b>	15000
<b>Indicators</b>		<b>Target</b>	
Number of IEC materials distributed		3000	
Number of volunteers trained		45	
<b>Priority Actions:</b>		<ul style="list-style-type: none"> <li>-Establishment of Community feedback systems and support to the Community feedback system (including monitoring of rumors and/or perceptions)</li> <li>-Broadcasting of radio messages in local languages on floods</li> <li>-Social mobilization for the promotion of good practices through focus groups</li> <li>-Workshops on lessons learned and capitalization of best practices</li> <li>-FGD for social mobilization - awareness raising and feedback</li> </ul>	

	<b>Health</b>	<b>Budget</b>	CHF 41,048
		<b>Targeted Persons</b>	15000
<b>Indicators</b>		<b>Target</b>	
Number of volunteers trained		45	
Number of people who received first aid		350	

**Priority Actions:**

- Deployment of 60 volunteers and health promotion focal points 3 days/week x 3 months
- 2-day refresher sessions for 150 volunteers/employees on psychosocial and EPIC care with a focus on waterborne diseases.
- Health Promotion/RCCE
- Deployment of 45 volunteers and health promotion focal points 2 - days/week x 2 months
- Deployment of 45 volunteers for first aid. 2 days/weeks x 2 months
- Purchase of first aid kits

**Multi-purpose Cash****Budget**

CHF 276,441

**Targeted Persons**

15000

**Indicators****Target**

Number of PDMs carried out

1

Number of evaluations completed

2

Number of households receiving cash grants

3000

Percentage of assisted households surveyed who state that cash assistance is sufficient to cover their basic needs

95

**Priority Actions:**

- Rapid evaluation of the market in the villages and mainly in the areas around the relocation sites will be carried out in the locality of Ngabé and its nine villages. The objective of this assessment will be to determine the extent to which displaced populations will be able to access the essential commodities they usually buy from markets, and to identify market-based ways to help people access these commodities when and where they need them. This precise information on the market system will also allow us to confirm the most appropriate transfer mechanism.
- □ □ Continuous evaluation and monitoring of the market
  - □ □ Detailed needs assessment in affected districts / villages - A rapid assessment covering WASH, food security and cross-cutting sectors will be carried out as a priority. The evaluation will also be used to confirm and supplement data from needs assessments conducted by government and other humanitarian partners
  - 2-day training session for 50 volunteers / staff on money transfer
  - Selection of beneficiaries in 4 days with criteria validated by the communities
  - Cash /Assistance to Targeted Beneficiaries
  - Each household will receive 50,000 FCFA in a single distribution. The estimate is based on different baskets of minimum spending baskets used in the country and takes into account the plans of other humanitarian agencies to ensure consistency

- Distribution of sims to beneficiarie
- Cash /Beneficiary Expenses

## About Support Services

### **How many staff and volunteers will be involved in this operation. Briefly describe their role.**

150 volunteers, 7 supervisors will be mobilized a project coordinator as well an assistant project manager  
In the Likouala region, 80 volunteers and 4 supervisors will be deployed, while 70 volunteers and 3 supervisors will be deployed in the Sangha region.

### **Will surge personnel be deployed? Please provide the role profile needed.**

A profile Cash Surge with coordination skills. for 3 month

### **If there is procurement, will it be done by National Society or IFRC?**

The NS has a Logistics team that will make all the purchases planned for the operation while respecting the procedures of the federation.

### **How will this operation be monitored?**

The IFRC cluster's PMER team in collaboration with the National Society's PMER will provide support to follow up this operation. On a weekly basis, the monitoring and evaluation department will present an update on the progress of activities in the field and possibly mention the difficulties in order to find solutions. Joint IFRC NS monitoring missions will be organized regularly.

### **Please briefly explain the National Societies communication strategy for this operation.**

The Red Cross will regularly participate in coordination meetings with all partners and stakeholders. during which the actions of the Red cross are presented in order to avoid duplication in implementation. A mid-term press release will be finalized and made available to partners and line ministries.

# Budget Overview



## DREF OPERATION

### MDRCG020 - REPUBLIC OF CONGO RED CROSS FLOODS

#### Operating Budget

<b>Planned Operations</b>	<b>409,268</b>
Shelter and Basic Household Items	0
Livelihoods	0
Multi-purpose Cash	276,441
Health	41,048
Water, Sanitation & Hygiene	70,954
Protection, Gender and Inclusion	1,206
Education	0
Migration	0
Risk Reduction, Climate Adaptation and Recovery	0
Community Engagement and Accountability	19,619
Environmental Sustainability	0
<b>Enabling Approaches</b>	<b>80,459</b>
Coordination and Partnerships	0
Secretariat Services	44,375
National Society Strengthening	36,083
<b>TOTAL BUDGET</b>	<b>489,727</b>

*all amounts in Swiss Francs (CHF)*

# Contact Information

For further information, specifically related to this operation please contact:

- **National Society contact:** Belarmand GAMPOUROU, secrétaire général, +242 : 06 626 53 99
- **IFRC Appeal Manager:** Mercy Laker, Head of Kinshasa Cluster, Mercy.LAKER@ifrc.org
- **IFRC Project Manager:**  
Zeade Leonard NIOULE, Coordinator, Programme • Health and Care, Kinshasa, Democratic Republic of Congo, leonard.nioule@ifrc.org, +225 41053680
- **IFRC focal point for the emergency:**  
Mumonayi Djamba IRENE, Officer, Health and Care • Health and Care, Kinshasa, Democratic Republic of Congo, mumonayi.irene@ifrc.org
- **Media Contact:**  
Euloge ISHIMWE, Manager, Communications • Africa - Communications, euloge.ishimwe@ifrc.org, +254 731 688 613

[Click here for the reference](#)